



PLATFORM OVERVIEW

# LIFESTYLE MEMBERSHIP

FOR BUSINESS & NON-PROFITS



## **Premier Lifestyle Membership**

**PREMIER SERVICES AND BENEFITS  
FOR PRIVATE MEMBERS**

# KEY CONCEPTS

## Scope and Outline

- 1.YAFI Presentation
- 2.Intro Slide
- 3.Key Concepts
- 4.Our Philosophy
- 5.YAFI at a Glance
- 6.Why YAFI?
- 7.Evolution
- 8.Member Only
- 9.Benefit Overview
- 10.Member Support
- 11,Milestones
- 12.Affiliate Strategy
- 13.Predictable Loyalty
- 14.Happy Families
- 15.Lifestyle Mobile
- 16.Entertainment
- 17.Stop COVID-19
- 18.Levels of Winning
- 19.Fun in Fundraising
- 20.Global Reach
- 21.Branding & Recycling



YAFI | YOU ASKED FOR IT!

# OUR PHILOSOPHY

## The Bigger Picture

To understand how people receive real benefits beyond traditional health insurance or related services, we discovered that certain benefits/services compliment others, but pricing would not make it feasible to access everything all at once, cost-effectively.

As a result, we set out to create a benefit platform, which would allow major vendors and services, to streamline their business model, by combining efforts with the help of a coded system. This allows profits to be generated through maximum effort, but at a substantially less cost to produce.

YAFI (You Asked For It) was created to help drive revenue, via a unique wholesale benefits platform.





## LIVE MEMBERSHIP SUPPORT

Measured on a 5-star customer service metrics, with 24/7 LIVE Member Services, who can answer questions or support in multiple ways.

## EXTENDED BENEFITS

Lifestyle Members have access to additional benefits that are accessible through one back-office. They'll save on travel, utilities, mobile communications, groceries, gas, online services, finance, and much more.

## LIFESTYLE BONUSES

The Lifestyle Membership is the foundation of how we impact communities, Nationwide. We supplement the membership with additional benefits, which are not part of the core Lifestyle "Rewards" Membership.

# YAFI AT A GLANCE



# WHY YAFI?

## Diverse



Designed to compliment most existing services, products, or non-profit models. Great for corporate employee benefits. Helps to create sustainable, predictable revenue.

## Imaginative



We pride ourselves on thinking outside the common benefits offers. Thus, creating a one-of-a-kind wholesale platform.

## Community



The most important objective for YAFI is our service to Members and Affiliates. It's the primary reason for our existence.

## In the Future . .



Continue to add on more benefits for the existing Members to save and profit from, while driving down overall cost.

# THE EVOLUTION OF YAFI..

## Our logo and the meaning behind it

The thought behind YAFI goes beyond the common ways that most receive lifestyle assistance.

Looking at it in the form of a metaphor. . .

Imagine hosting a fundraiser that works more like an I.V. in your arm, which provides *ongoing* nutrients for the lifeblood of your cause. Clearly, this option or treatment is more desirable than receiving a one-time shot-in-the-arm.. "wouldn't you agree?"

We help you keep the pain away, by implementing more value, consequently impacting revenue.





## Special Member Access

Membership is the driving force behind offering great savings and benefits for our members. The 3-month option is an introductory offer. The 6-month or 12-month membership is required to maintain the integrity of the platform



## Complimentary Services

Going beyond the standard is what makes YAFI special. We include TV streaming, mobile communications (all major carriers networks), household cost auditing and more. We include extended savings and services for all members.

# PROFITABLE BENEFITS FOR YOUR MEMBERS

**There is another Level!**

Affiliate (non-profits, associations, groups, etc.,) help their members receive special wholesale pricing. YAFI is then added to the Affiliate website as a "Member Benefit" for its membership coalition to access,

Unlike other benefit programs, we allow a next-level of *revenue* for Affiliates (business, non-profit, corporation, etc.). Business Members have the unique opportunity to purchase "wholesale" Lifestyle Memberships from Affiliate Associations, Non-Profits, Groups, etc., in order to resale for a profit.

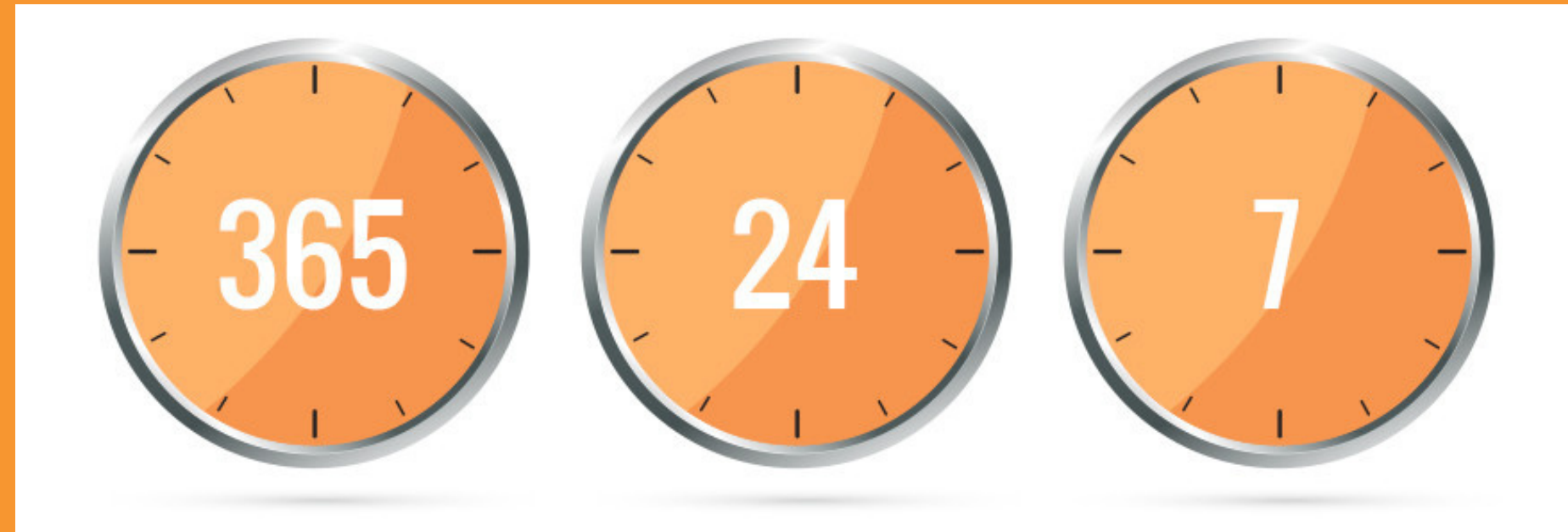




**We Are Always  
Here When You Ask  
For It!**

When either calling for financial services, shopping assistance, travel opportunities, roadside assistance, or to speak with a doctor 24/7 - we are here to address all member needs with LIVE support.

**MEMBER**



**SUPPORT**

# YAFI MILESTONES

## Timeline of our evolution



# AFFILIATE STRATEGY

## SERVICES

The first goal was to provide a great system that would allow Affiliates to help communities. Furthermore, we include a tool to measure all progress with detailed reports.

## SUPPORT

We include 24/7 LIVE Member Services to help answer questions, or to give direct assistance. YAFI is the only wholesale platform that features LIVE member support for most-to-all of our services.

## STRATEGY

This is probably the biggest benefits of becoming a YAFI Affiliate. Flexibility to implement an array of marketing, and other approaches to grow your business, or assist with revenue stream.

## COMMUNITY

All of our programs are design to give-back more than the minor investment required to receive a Lifestyle Membership.



# PREDICTABLE LOYALTY

## "Project Come Back & Tell More"

In any organization, the most important objective is to receive repeat business, referrals, donations, contributions, etc.,. YAFI is built to help you create loyalty with limitless boundaries.



## EMPLOYEE / DONOR BENEFITS

### What are employee/donor benefits?

We often get asked – what are employee or donor benefits? Employee / Donor benefits, also known as perks or fringe benefits, which are provided to employees or donors over and above salaries and wages for employees - and above the value of the donation.

### Why are employee/donor benefits important?

Offering Lifestyle Benefits is important because it shows them you are invested in their family, money and future. A solid benefits package can help to attract and retain employee talent. A solid benefits package can help donors repeat their efforts for your next fundraising drive.

# LIFESTLYE



# MEMBERSHIP



# HAPPY FAMILIES!

## Household Benefits

The Lifestyle Membership is centered around family with benefits for the entire household. including, **Complimentary** Family Travel Certificates, **Complimentary** LIVE Streaming TV/Movies service, **Complimentary** Household Cost Reduction, Mobile Communications, Dining and Shopping Discounts, plus much more!





## MOBILE WITH BENEFITS

We are the 1st to includes mobile services with streaming TV, live credit repair assistance, vacation packages, shopping discounts and more, in one membership.

## CHOOSE YOUR 5G SERVICE

Members are able to keep their same number and network, but overall receive much more coverage.

## LIFESTYLE AND MOBILE

YAFI entire platform is based on on a "recycled" concept. ensuring everyone WINS!







# GREATEST ENTERTAINMENT PACKAGE

Live TV, Movies, Shows, More!

## STREAMING TV

We include streaming TV service as a complimentary service for all Lifestyle Members.

## WIDE REACH

Services are supported nationwide by 24/7 live attendants.

## FRESH CONTENT

New programs are always being created by our staff for your future benefit.

YAFI | YOU ASKED FOR IT!

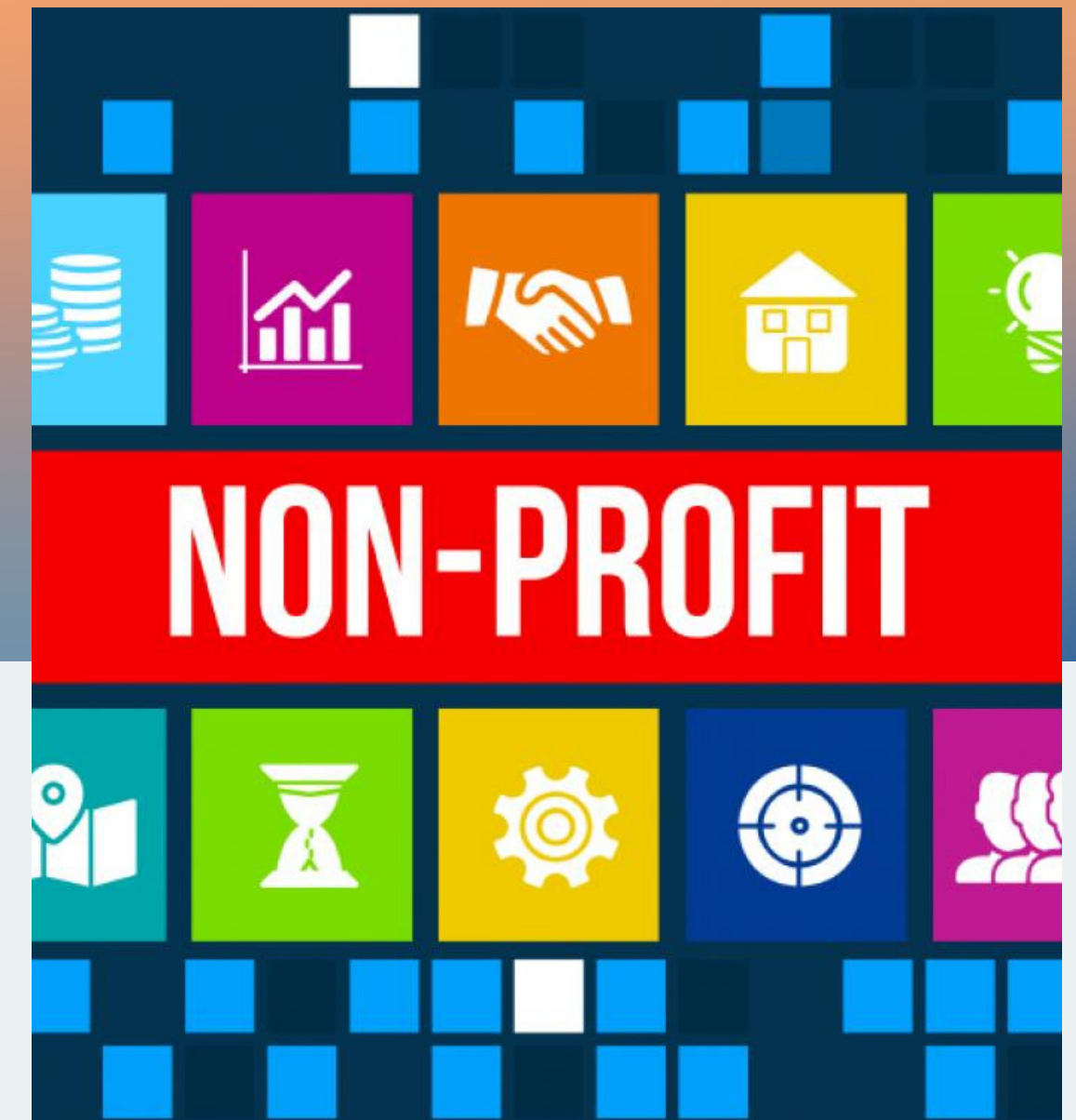
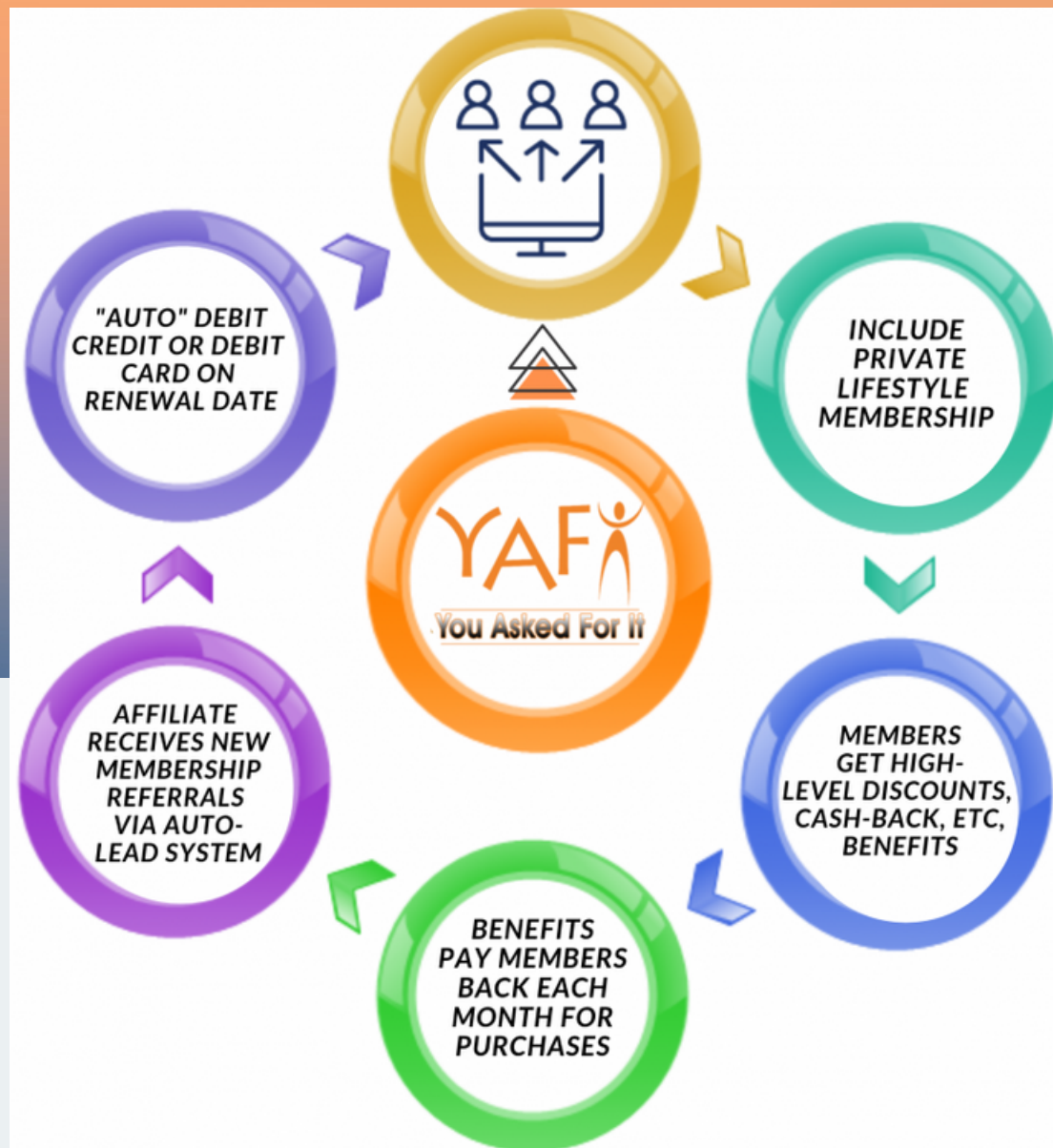
# STOP COVID-19



## The World's First COVID-19 Natural Solution

Organic based, non-GMO, drug and alcohol-free solution with no added chemicals, which has been successfully proven to kill COVID-19. Test results in a USA CDC approved lab indicate that the product kills the virus in two (2) minutes time. The product, Protectene Anti-Pathogenic Aerosol Solution, has applicable use on porous and non-porous surfaces and can be micro vaporized into the building HVAC systems to protect occupants. **100% organic and even safe for all ages to consume if swallowed.**





## 3-Level Recycled Revenue

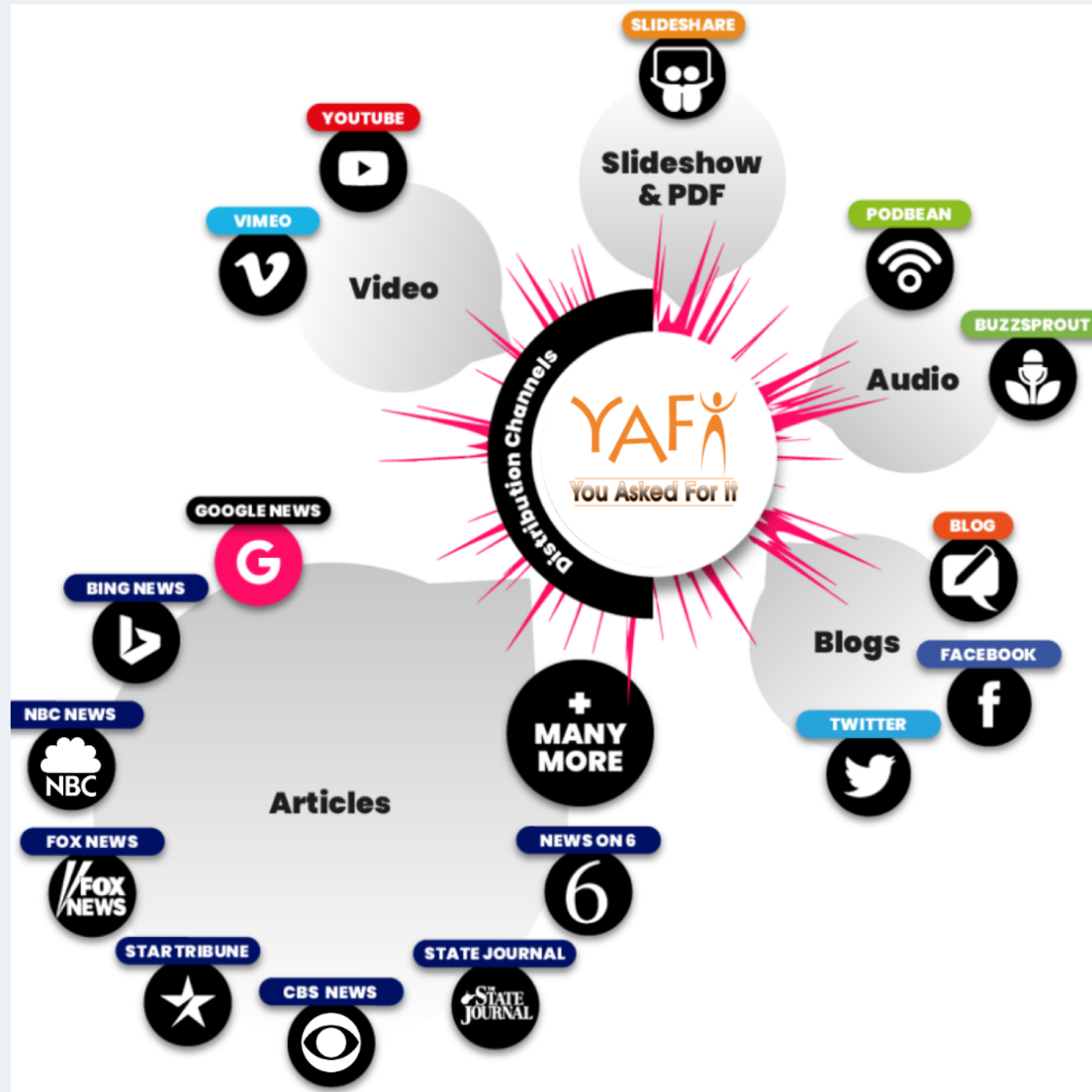
Unlike most benefit programs, our Lifestyle Membership offers a 3-tier revenue share opportunity. We are happy to go in great detail on why this will help in ways you've not yet discovered.

**NOTE: We are not an MLM, or Network Marketing company.**





# BRANDING & RECYCLING



## LIFESTYLE CREDITS

Lifestyle Affiliates can receive \$1295 in branding campaign credit with Lifestyle Bundles.

## BRAND AWARENESS

Major placement on news and other mediums to gain great exposure for event, cause, or fundraiser.

## RECYCLE BACK TO YOU

YAFI entire platform is based on on a "recycled" concept. ensuring everyone, WINS!



**You Asked For It**